

ORGANIZATIONAL, DIRECT SUPPORT, AND
GENERAL SUPPORT MAINTENANCE
REPAIR PARTS AND SPECIAL TOOLS LIST
(INCLUDING DEPOT MAINTENANCE REPAIR
PARTS AND SPECIAL TOOLS)
FOR
POWER SUPPLY/DC DUAL
(0-40V DC/0-1.5A)
(NSN 6130-00-065-6811)

DEPARTMENTS OF THE ARMY, THE NAVY, AND THE AIR FORCE

15 NOVEMBER 1985

TECHNICAL MANUAL
No. 11-6130-416-24P
TECHNICAL MANUAL
EE010-BJ-PLL-010/E154 DCDUAL
TECHNICAL ORDER
TO 35C1-2-847-4

DEPARTMENTS OF THE ARMY,
THE NAVY, AND THE AIR FORCE

WASHINGTON, DC, 15 November 1985

**ORGANIZATIONAL, DIRECT SUPPORT, AND
GENERAL SUPPORT, MAINTENANCE
REPAIR PARTS AND SPECIAL TOOLS LIST
(INCLUDING DEPOT MAINTENANCE REPAIR PARTS
AND SPECIAL TOOLS)
FOR
POWER SUPPLY/DC DUAL
(0-40VDC/O-1 .5A)
(NSN 6130-00-065-6811)
Current as of 24 June 1985**

REPORTING ERRORS AND RECOMMENDING IMPROVEMENTS

You can help improve this manual. If you find any mistakes or if you know of a way to improve the procedures, please let us know. Mail your letter, DA Form 2028 (Recommended Changes to Publications and Blank Forms), or DA Form 2028-2 located in back of this manual direct to: Commander, US Army Communications-Electronics Command and Fort Monmouth, ATTN: AM- SEL-ME-MP, Fort Monmouth, New Jersey 07703-5007. For Air Force, submit AFTO Form 22 (Technical Order System Publication Improvement Report and Reply) in accordance with paragraph 6-5, Section VI, T.O. 00-5-1. Forward direct to prime ALC/MST. For Navy, mail comments to the Commander, Naval Electronics Systems Command, ATTN: ELEX 8122, Washington, DC 20360. In either case, a reply will be furnished direct to you.

Table of Contents

		Page	Illus Figure
SECTION	I. Introduction	1	
	II. Repair Parts List.....	1-1	
GROUP	00 Power Supply/DC Dual (0-40VDC/0-1.5A)	1-1	1
	01 Printed Circuit Boards		
	Circuit Card A1.....	2-1	2
	Circuit Card, Crowbar	3-1	3
	02 Front Panel Assembly (See Group 00 for parts)		
	03 Chassis Assembly (See Group 00 for parts)		
SECTION	III. Special Tools List (Not applicable)		
	IV. National Stock Number and Part Number Index	I-1	

SECTION I
INTRODUCTION

1. Scope

This manual lists and authorizes spares and repair parts; special tools; special test, measurement, and diagnostic equipment (TMDE); and other special support equipment required for performance of organizational, direct support, and general support maintenance of the Power Supply/DC Dual. It authorizes the requisitioning, issue, and disposition of spares, repair parts and special tools as indicated by the source, maintenance and recoverability (SMR) codes.

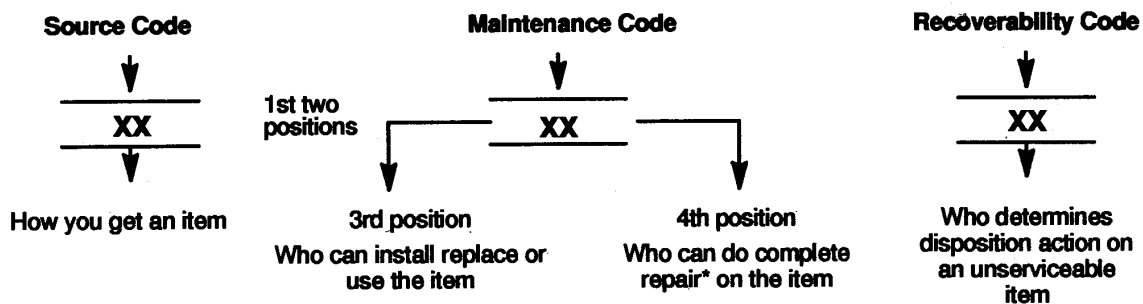
2. General

This Repair Parts and Special Tools List is divided into the following sections:

- a. *Section II. Repair Parts List.* A list of spares and repair parts authorized by this RPSTL for use in the performance of maintenance. The list also includes parts which must be removed for replacement of the authorized parts. Parts lists are composed of functional groups in ascending numeric sequence, with the parts in each group listed in ascending item number sequence. Figure numbers are listed directly beneath the group header.
- b. *Section III. Special Tools List.* Not applicable.
- c. *Section IV. National Stock Number and Part Number Index.* A list, in National item identification number (NIIN) sequence, of all National stock numbered items appearing in the listing, followed by a list in alphameric sequence of all part numbers appearing in the listings. National stock numbers and part numbers are cross- referenced to each illustration figure and item number appearance.

3. Explanation of Columns (Section II and III)

- a. *Item No. (Column 1).* Indicates the number used to identify items called out in the illustration.
- b. *SMR Code (Column 2).* The source, maintenance, and recoverability (SMR) code is a five-position code containing supply/requisitioning information, maintenance category authorization criteria, and disposition instruction, as shown in the following breakout:



NOTE

Complete Rear: Maintenance capacity, capability, and authority to perform all corrective maintenance tasks of the "Repair" function in a use/user environment in order to restore serviceability to a failed item.

- (1) *Source Code.* The source code tells you how you get an item needed for maintenance, repair, or overhaul of an end item/equipment. Explanations of source codes follow.

<i>Code</i>	<i>Explanation</i>
PA PB PC** PD	<p>Stocked items; use the applicable NSN to request/requisition items with these source codes. They are authorized to the category indicated by the code entered in the 3rd position of the SMR code.</p> <p style="text-align: center;">NOTE Items coded PC are subject to deterioration</p>
PEPF PG	
KD KF KB	<p>Items with these codes are not to be requested/requisitioned individually. They are part of a kit which is authorized to the maintenance category indicated in the 3rd position of the SMR code. The complete kit must be requisitioned and applied.</p>

Explanation

MO (Made at org AVUM level) MF (Made at DS/AVUM level) MH (Made at GS level) ML (Made at Specialized Repair Activity (SRA)) MD (Made at Depot)	<p>Items with these codes are not to be requested/requisitioned individually. They must be made from bulk material which is identified by the part number in the DESCRIPTION and USABLE ON CODE (UOC) column and listed in the Bulk Material group of the repair parts list in the RPSTL. If the item is authorized to you by the 3rd position code of the SMR code, but the source code indicates it is made at a higher level, order the item from the higher level of maintenance.</p>

Explanation

AO (Assembled by org AVUM Level) AF (Assembled by DS/AVUM Level) AH (Assembled by GS Category) AL (Assembled by SRA) AD (Assembled by Depot)	<p>Items with these codes are not to be requested/requisitioned individually. The parts that make up the assembled item must be requisitioned or fabricated and assembled at the level of maintenance indicated by the source code. If the 3rd position code of the SMR code authorizes you to replace the item, but the source code indicates the items are assembled at a higher level, order the item from the higher level of maintenance.</p>

<i>Code</i>	<i>Explanation</i>
-------------	--------------------

- | | |
|----|--|
| XA | - - Do not requisition an "XA"-coded item. Order its next higher assembly. (Also, refer to the NOTE below.) |
| XB | - - If an "XB" item is not available from salvage, order it using the FSCM and part number given. |
| XC | - - Installation drawing, diagram, instruction sheet, field service drawing, that is identified by manufacturer's part number. |
| XD | - - Item is not stocked. Order an "XD"-coded item through normal supply channels using the FSCM and part number given, if no NSN is available. |

NOTE

Cannibalization or controlled exchange, when authorized, may be used as a source of supply for items with the above source codes, except for those source coded "XA" or those aircraft support items restricted by requirements of AR 750-1

- (2) *Maintenance Code.* Maintenance codes tells you the level(s) of maintenance authorized to USE and REPAIR support items. The maintenance codes are entered in the third and fourth positions of the SMR code as follows:

- (a) The maintenance code entered in the third position tells you the lowest maintenance level authorized to remove, replace, and use an item. The maintenance code entered in the third position will indicate authorization to the following levels of maintenance.

<i>Code</i>	<i>Application/Explanation</i>
-------------	--------------------------------

- C - Crew or operator maintenance done within the organization or aviation unit maintenance.
- O - Organizational or aviation unit category can remove, replace, and use the item.
- F - Direct support or aviation intermediate level can remove, replace, and use the item.
- H - General support level can remove, replace, and use the item.
- L - Specialized repair activity can remove, replace, and use the item.
- D - Depot level can remove, replace, and use the item.

- (b) The maintenance code entered in the fourth position tells whether or not the item is to be repaired and identifies the lowest maintenance level with the capability to do complete repair (i.e., perform all authorized repair functions). This position will contain one of the following maintenance codes.

NOTE

Some limited repair may be done on the item at a lower level of maintenance, if authorized by the Maintenance Allocation Chart (MAC) and SMR codes Code

Application/Explanation

- O - Organizational or (aviation unit) is the lowest level that can do complete repair of the item.
- F - Direct support or aviation intermediate level is the lowest level that can do complete repair of the item.
- H - General Support is the lowest level that can do complete repair of the item.
- L - Specialized repair activity is the lowest level that can do complete repair of the item.
- D - Depot is the lowest level that can do complete repair of the item.
- Z - Nonreparable. No repair is authorized.
- B - No repair is authorized. (No parts or special tools are authorized for the maintenance of a "B" coded item). However, the item may be reconditioned by adjusting, lubricating, etc., at the user level.

- (3) *Recoverability Code.* Recoverability codes are assigned to items to indicate the disposition action on unserviceable items. The recoverability code is entered in the fifth position of the SMR Code as follows:

<i>Recoverability Codes</i>	<i>Application/Explanation</i>
-----------------------------	--------------------------------

- Z - Nonreparable item. When unserviceable, condemn and dispose of the item at the level of maintenance shown in 3rd position of SMR Code.
- O - Reparable item. When not economically reparable, condemn and dispose of the item at organizational or aviation unit level.
- F - Reparable item. When uneconomically reparable, condemn and dispose of the item at the direct support or aviation intermediate level.
- H - Reparable item. When uneconomically reparable, condemn and dispose of the item at the general support level.
- D - Reparable item. When beyond lower level repair capability, return to depot. Condemnation and disposal of item not authorized below depot level.
- L - Reparable item. Condemnation and disposal not authorized below specialized repair activity (SRA).
- A - Item requires special handling or condemnation procedures because of specific reasons (e.g., precious metal content, high dollar value, critical material, or hazardous material). Refer to appropriate manuals/directives for specific instructions.

- c. *FSCM (Column (3))*. The Federal Supply Code for Manufacturer (FSCM) is a 5-digit numeric code which is used to identify the manufacturer, distributor, or Government agency, etc. that supplies the item.
- d. *Part number (Column (4))*. Indicates the primary number used by the manufacturer, (individual, company, firm, corporation, or Government activity), which controls the design and characteristics of the item by means of its engineering drawings, specifications, standards, and inspection requirements to identify an item or range of items.

NOTE

When you use an NSN to requisition an item, the item you receive may have a different part number from the part ordered.

- e. *Description And Usable On Code (Uoc) (Column (5))*. This column includes the following information:
 - (1) The Federal item name and, when required, a minimum description to identify the item.
 - (2) The statement "END OF FIGURE" appears just below the last item description in Column (5) for a given figure in both Section II and Section III.
- f. *QTY (Column (6))*. The QTY (quantity per figure) column indicates the quantity of the item used in the breakout shown on the illustration figure, which is prepared for a functional group, subfunctional group, or an assembly. A "V" appearing in the column in lieu of a quantity indicates that the quantity is variable and may vary from application to application.

4. EXPLANATION OF INDEX FORMAT AND COLUMNS (SECTION IV).

- a. *National Stock Number (NSN) Index*.
 - (1) *STOCK NUMBER Column*. This column lists the NSN in national item identification number (NIIN) sequence. The NIIN consists of the last nine digits of the NSN. When using this column to locate an item, ignore the first four digits of the NSN. However, the complete NSN should be used when ordering items by stock number.
 - (2) *Fig. Column*. This column lists the number of the figure where the item is identified/located. The figures are in numerical order in Section II and Section III.
 - (3) *Item Column*. The item number identifies the item associated with the figure listed in the adjacent FIG. column. This item is also identified by the NSN listed on the same line.
- b. *Part Number Index*. Part numbers in this index are listed in ascending alphanumeric sequence (i. e., vertical arrangement of letter and number combinations which place the first letter or digit of each group in order A through Z, followed by the numbers 0 through 9, and each following letter or digit in like order).
 - (1) *FSCM column*. The Federal Supply Code for Manufacturer (FSCM) is a 5-digit numeric code used to identify the manufacturer, distributor, or Government agency/activity that supplies the item.
 - (2) *Part Number Column*. Indicates the primary number used by the manufacturer (individual, firm, corporation, or Government activity), which controls the design and characteristics of the item by means of its engineering drawings, specifications, standards, and inspection requirements to identify an item or range of items.
 - (3) *Stock Number Column*. This column lists the NSN for the associated part number and manufacturer identified in the PART NUMBER and FSCM columns to the left.
 - (4) *Fig. Column*. This column lists the number of the figure where the item is identified/located in Section II and Section III.
 - (5) *Item Column*. The item number is that number assigned to the item as it appears in the figure referenced in the adjacent figure number column.

5. SPECIAL INFORMATION.

- a. *Associated Publications*. The publications listed below pertain to the Power Supply/DC Dual and its components:
TM 11-6130-416-14, Power Supply/DC Dual
- b. *National Stock Numbers*. National stock numbers (NSN's) that are missing from P source coded items have been applied for and will be added to this TM by future change/revision when they are entered in the Army Master Data File (AMDF). Until the NSN's are established and published, submit exception requisitions to: Commander, US Army Communications-Electronics Command and Fort Monmouth, ATTN: AMSEL-MM, Fort Monmouth, NJ 07703-5006 for the part required to support your equipment.

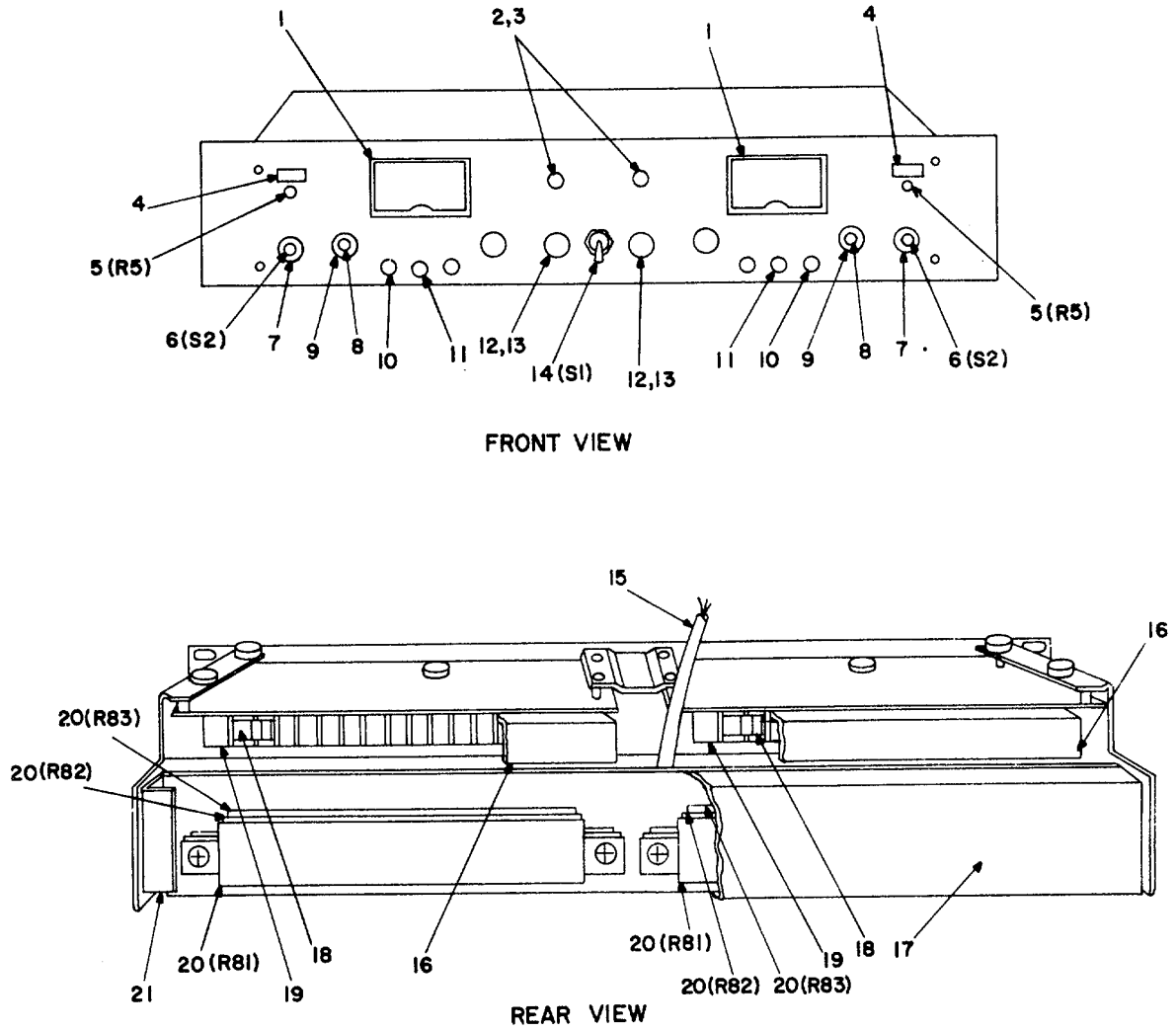
6. HOW TO LOCATE REPAIR PARTS.

- a. When National Stock Numbers or Part Numbers are NOT Known.
 - (1) *First*. Using the table of contents, determine the assembly or subassembly group to which the item belongs. This is necessary since figures are prepared for assembly groups and subassembly groups, and listings are divided into the same groups.

- (2) *Second* Find the figure covering the assembly group or subassembly group to which the item belongs.
 - (3) *Third*. Identify the item on the figure and note the item number.
 - (4) *Fourth*. Refer to the Repair Parts List for the figure to find the part number for the item number noted on the figure.
 - (5) *Fifth*. Refer to the Part Number Index to find the NSN, if assigned.
- b. When National Stock Number or Part Number is known:
- (1) *First*. Using the of National Stock Number and Part Numbers, find the pertinent National Stock Number or Part Number. The NSN index is in National Item Identification Number (NIIN) sequence (see c-4a.(1)). The part numbers in the Part Number index are listed in ascending alphanumeric sequence (see paragraph c-4.b). Both indexes cross-reference you to the illustration figure and item number of the item you are looking for.
 - (2) *Second*. After finding the figure and item number, verify that the item is the one you are looking for, then locate the item number in the repair parts list for the figure.

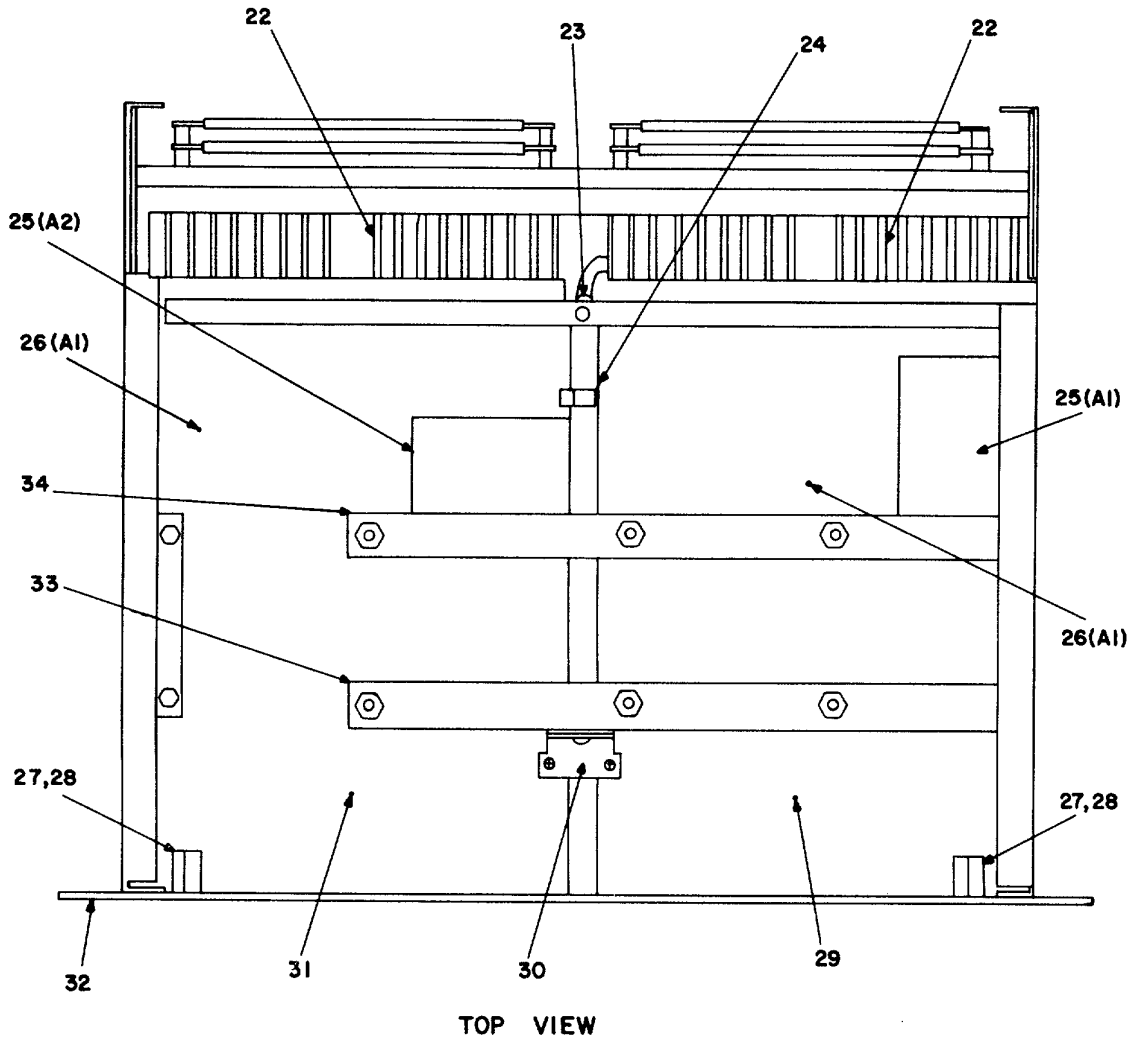
7. ABBREVIATIONS.

Not applicable.



EL8FW001

Figure 1. Power Supply/DC Dual (0-40VDC/0-1.5A) (Sheet 1 of 2).



EL8FW002

Figure 1. Power Supply/DC Dual (0-40VDC/-1.5A) (Sheet 2 of 2).

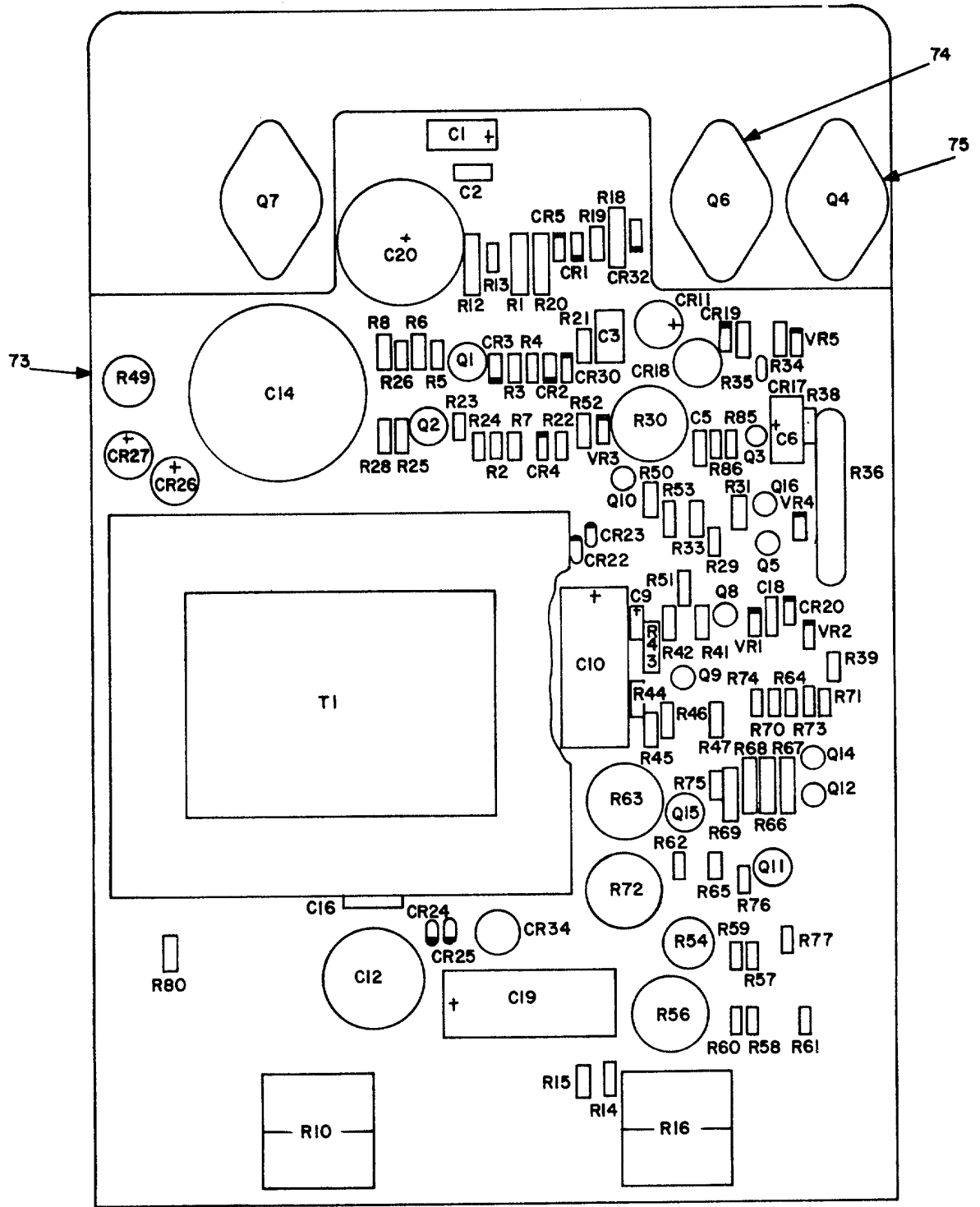
(1) ITEM NO	(2) SMR CODE	(3) FSCM	(4) PART NUMBER	(5) DESCRIPTION AND USABLE ON CODES (UOC)	(6) QTY
-------------------	--------------------	-------------	-----------------------	--	------------

**GROUP 00 POWER SUPPLY/DC DUAL
(0-40VDC/O-1.5A)**

FIG. 1

1	XDDZZ	07980	1120-1139	VOLTMETER	2
2	PADZZ	28480	4040-0295	BEZEL, INSTRUMENT MO	2
3	PAOZZ	81349	M15098-11-004	LAMP, GLOW	2
4	XBDZZ	28480	7124-0389	LABEL, INSTRUCTION	2
5	PADZZ	28480	2100-1854	RESISTOR, VARIABLE, N	2
6	PADZZ	28480	3100-1910	SWITCH, ROTARY	2
7	PAOZZ	28480	0370-0084	KNOB	2
8	PAOZZ	28480	0370-0179	KNOB	2
9	PAOZZ	28480	0370-0101	KNOB	2
10	XBDZZ	28480	1510-0040	BINDING POST, MAROON	2
11	PADZZ	58474	BP21B	POST, BINDING, ELECTR	2
12	PADZZ	75915	342014	FUSEHOLDER, EXTRACTO	2
13	PAOZZ	81349	F02A250V2A	FUSE, CARTRIDGE	2
14	PADZZ	87034	54-6168126A1H	SWITCH, PUSH	1
15	PADZZ	70903	KH-4096	CABLE ASSEMBLY, POWER	1
16	XBDZZ	09182	B-5950-5221-1	GUARD, ANGLE	2
17	XBDZZ	09182	C-1COVER	COVER, OUTRIGGER	1
18	PADZZ	71785	422-13-11-013	CONNECTOR, ELECTRICA	2
19	PADZZ	28480	0360-1234	TERMINAL STRIP	2
20	PADZZ	73978	6BR-37	RESISTOR, FIXED, WIRE	6
21	XBDZZ	09182	C-1	CHASSIS, OUTRIGGER	1
22	XBDZZ	09182	A-5950-5233-1	HEAT SINK ASSEMBLY	2
23	PADZZ	28520	SR-5P-1	BUSHING, STRAIN RELI	1
24	XBDZZ	79307	T4-4	CLAMP, CABLE	1
25	XBDDD	28480	5060-6176	CKT CD, CROWBAR MOD	2
26	PADDD	28480	06255-60021	CIRCUIT CARD ASSEMB	2
27	PADZZ	28480	2950-0034	NUT, PLAIN, HEXAGON	1
28	PADZZ	28480	1410-0052	BUSHING, MACHINE THR	1
29	XBDZZ	09182	D-5950-5249-1R	CHASSIS ASSY, RIGHT	1
30	XBDZZ	09182	B-1	BRACKET, PC BOARD	1
31	XBDZZ	09182	D-5950-5249-1L	CHASSIS ASSY, LEFT	1
32	XBDZZ	28480	06255-60003	FRONT PANEL	1
33	XBDZZ	09182	C-5950-5271-1R	BRACKET, XFRMR, RIGT	1
34	XBDZZ	09182	C-5950-5271-1L	BRACKET, XFRMR, LEFT	1

END OF FIGURE



PREFIX ALL REFERENCE DESIGNATIONS WITH A1.

EL8FW003

Figure 2. Circuit card, A1 (Sheet 1 of 2).

REF. DES.	ITEM NO.	REF. DES.	ITEM NO.
CR1-5	1	R22,23	21
CR11	2	R24	37
CR17	3	R25	25
CR18	2	R26	24
CR19,20	1	R28	27
CR22-27	3	R29	24
CR30	1	R30	38
CR32	1	R31	39
CR34	2	R33	40
C1	4	R34	41
C2	5	R35	42
C3	6	R36	43
C5	7	R38	40
C6	8	R39	44
C9	9	R41	45
C10	10	R42	46
C12	11	R43	47
C14	12	R44	48
C16	13	R45	49
C18	5	R46	50
C19	14	R47	51
C20	11	R49	52
Q1,2	15	R50	53
Q3	16	R51	54
Q4	17	R52	55
Q5	16	R53	56
Q6,7	18	R54	57
Q8	16	R56	58
Q9	19	R57	59
Q10	16	R58,59	60
Q11	15	R60	59
Q12	16	R61	61
Q14,15	16	R62	59
Q16	19	R63	38
R1	20	R64,65	23
R2	21	R66,67	62
R3	22	R68,69	63
R4	23	R70,71	64
R5	24	R72	65
R6	25	R73	66
R7	26	R74	67
R8	27	R75	64
R10	28	R76,77	24
R12	29	R80	68
R13	30	R85	64
R14	31	R86	21
R15	32	T1	69
R16	33	VR1,2	70
R18	34	VR3	71
R19	30	VR4,5	72
R20	35		
R21	36		

Figure 2. Circuit card, A1 (Sheet 2 of 2).

(1) ITEM NO	(2) SMR CODE	(3) FSCM	(4) PART NUMBER	(5) DESCRIPTION AND USABLE ON CODES (UOC)	(6) QTY
GROUP 01 PRINTED CIRCUIT BOARDS					
FIG. 2 CIRCUIT CARD, AI					
1	PADZZ	28480	1901-0033	SEMICONDUCTOR DEVIC.....	9
2	PADZZ	81349	JAN1N4998	SEMICONDUCTOR DEVIC.....	3
3	PADZZ	80131	1N5059	SEMICONDUCTOR DEVIC.....	7
4	PADZZ	56289	150D475X9050B2	CAPACITOR, FIXED, ELE	1
5	PADZZ	56289	192P10352	CAPACITOR, FIXED, PLA	2
6	PADZZ	56289	292P10452	CAPACITOR, FIXED, PLA	1
7	PADZZ	56289	292P10252	CAPACITOR, FIXED, PLA	1
8	PADZZ	14723	014A020	CAPACITOR, FIXED, ELE	1
9	PADZZ	81349	M39003/01-3088	CAPACITOR, FIXED, ELE	1
10	PCDZZ	28480	0180-1852	CAPACITOR, FIXED, ELE	1
11	PADZZ	09182	D38618	CAPACITOR, FIXED, ELE	2
12	PADZZ	28480	0180-1895	CAPACITOR, FIXED, ELE	1
13	PADZZ	13499	913-3235-00	CAPACITOR, FIXED, CER.....	1
14	XDDZZ	56289	150D156X0050R2	CAPACITOR, FIXED, ELE	1
15	PADZZ	28480	1854-0229	SEMICONDUCTOR DEVIC.....	3
16	PADZZ	56289	2N2907A	TRANSISTOR	7
17	PADZZ	04713	MJ2955	TRANSISTOR	1
18	PADZZ	28480	1854-0225	TRANSISTOR	2
19	PADZZ	80131	2N3391A	TRANSISTOR	2
20	PADZZ	81349	RW69V102	RESISTOR, FIXED, WIRE	1
21	PADZZ	81349	RNC55K6191FS	RESISTOR, FIXED, FILM	4
22	PADZZ	81349	RNC55K1502FS	RESISTOR, FIXED, FILM	1
23	PADZZ	81349	RNC55K2002FS	RESISTOR, FIXED, FILM	3
24	PADZZ	81349	RNC55K1501FS	RESISTOR, FIXED, FILM	5
25	PADZZ	81349	RCR20G364JS	RESISTOR, FIXED, COMP	2
26	PADZZ	81349	RNC55K6192FS	RESISTOR, FIXED, FILM	1
27	PADZZ	81349	RCR20G564JS	RESISTOR, FIXED, COMP	2
28	PADZZ	28480	2100-0997	RESISTOR, VARIABLE, W	1
29	PADZZ	81349	RW69V132	RESISTOR, FIXED, WIRE	1
30	XBDZZ	01121	EBSELECTED	RESISTOR, FXD, CMPSN	2
31	PADZZ	01121	EB-0335	RESISTOR, FIXED, COMP	1
32	PADZZ	81349	RCR20G334JS	RESISTOR, FIXED, COMP	1
33	PADZZ	28480	2100-0994	RESISTOR, VARIABLE, W	1
34	PADZZ	56289	242E5025	RESISTOR, FIXED, WIRE	1
35	PADZZ	81349	RNC60KIOOIFS	RESISTOR, FIXED, FILM	1
36	PADZZ	81349	RCR20G390JS	RESISTOR, FIXED, COMP	1
37	PADZZ	81349	RNC55K4751FS	RESISTOR, FIXED, FILM	1
38	PADZZ	11236	110-F4-5K	RESISTOR, VARIABLE, N	2
39	PADZZ	81349	RCR20G102JS	RESISTOR, FIXED, COMP	1
40	PADZZ	81349	RCR20G1003JS	RESISTOR, FIXED, COMP	2
41	PADZZ	81349	RCR20G161JS	RESISTOR, FIXED, COMP	1
42	PADZZ	81349	RCR20G201JS	RESISTOR, FIXED, COMP	1
43	PADZZ	81349	RW68V511	RESISTOR, FIXED, WIRE	1
44	PADZZ	81349	RNC55K1211FS	RESISTOR, FIXED, FILM	1
45	PADZZ	81349	RCR20G123JS	RESISTOR, FIXED, COMP	1
46	PADZZ	81349	RCR20G682JS	RESISTOR, FIXED, COMP	1
47	PADZZ	81349	RNC60K4220FS	RESISTOR, FIXED, FILM	1

SECTION II

TM 11-6130-416-24P

(1) ITEM NO	(2) SMR CODE	(3) FSCM	(4) PART NUMBER	(5) DESCRIPTION AND USABLE ON CODES (UOC)	(6) QTY
48	PADZZ	28480	23-47KR5	RESISTOR, FIXED, COMP	1
49	PADZZ	81349	RCR20G512JS	RESISTOR, FIXED, COMP	1
50	XDDZZ	81349	RCR20G104JS	RESISTOR, FIXED, COMP	1
51	PADZZ	81349	RCR20G471JS	RESISTOR, FIXED, COMP	1
52	PADZZ	28480	0811-0957	RESISTOR, FIXED, WIRE	1
53	PADZZ	81349	RCR20G100JS	RESISTOR, FIXED, COMP	1
54	PADZZ	81349	RCR20G303JS	RESISTOR, FIXED, COMP	1
55	PADZZ	01121	EB-2235	RESISTOR, FIXED, COMP	1
56	PADZZ	01121	EB3025	RESISTOR, FIXED, COMP	1
57	PADZZ	28480	0811-1818	RESISTOR, FIXED, WIRE	1
58	PADZZ	11236	110-F4-IK	RESISTOR, VARIABLE, W	1
59	PADZZ	81349	RNC55K9090FS	RESISTOR, FIXED, FILM	3
60	PADZZ	81349	RNC55K1000FS	RESISTOR, FIXED, FILM	2
61	PADZZ	81349	RNC55K4752FS	RESISTOR, FIXED, FILM	1
62	PADZZ	81349	RNC60K3401FS	RESISTOR, FIXED, FILM	2
63	PADZZ	81349	RNC60K3650FS	RESISTOR, FIXED, FILM	2
64	PADZZ	81349	RNC55K3011FS	RESISTOR, FIXED, FILM	4
65	PADZZ	11236	110-F4-250	RESISTOR, VARIABLE, W	1
66	PADZZ	81349	RNC55K7500FS	RESISTOR, FIXED, FILM	1
67	PADZZ	81349	RNC55K9091FS	RESISTOR, FIXED, FILM	1
68	PADZZ	81349	RCR20G333JS	RESISTOR, FIXED, COMP	1
69	PADZZ	28480	9100-1838	TRANSFORMER, POWER	1
70	PADZZ	06486	1N821	SEMICONDUCTOR DEVIC.....	2
71	PADZZ	28480	1902-3070	SEMICONDUCTOR DEVIC.....	1
72	PADZZ	28480	1902-0797	SEMICONDUCTOR DEVIC.....	2
73	XADZZ	28480	5020-5598	PRINTED WIRING BD	1
74	PADZZ	06694	734K	INSULATOR, PLATE.....	3
75	XBDZZ	28480	0340-0166	INSULATOR.....	3

END OF FIGURE

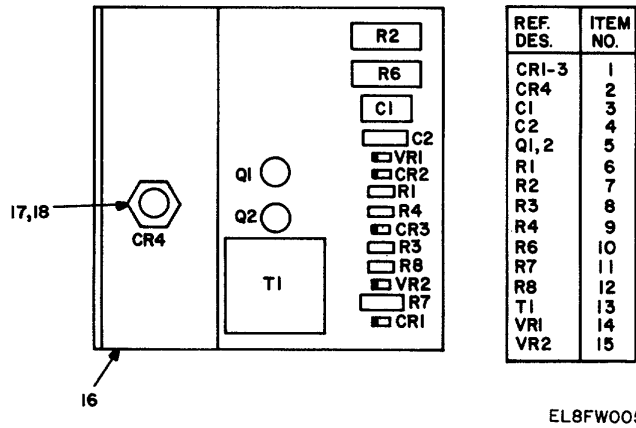


Figure 3. Circuit card, crowbar.

(1) ITEM NO	(2) SMR CODE	(3) FSCM	(4) PART NUMBER	(5) DESCRIPTION AND USABLE ON CODES (UOC)	(6) QTY
GROUP 01 PRINTED CIRCUIT CARDS					
FIG. 3 CIRCUIT CARD, CROWBAR					
1	PADZZ	28480	1901-0033	SEMICONDUCTOR DEVIC.....	3
2	PADZZ	03508	C220A	SEMICONDUCTOR DEVIC.....	1
3	PCDZZ	56289	30D105F150BA2	CAPACITOR, FIXED, ELE	1
4	PADZZ	81349	CM15FD511G03	CAPACITOR, FIXED, MIC.....	1
5	PADZZ	80131	2N3417	TRANSISTOR	2
6	PADZZ	81349	RNC55K10ROFS	RESISTOR, FIXED, FILM	1
7	PADZZ	81349	RCR32G622JS	RESISTOR, FIXED, COMP	1
8	PADZZ	81349	RNC55K1211FS	RESISTOR, FIXED, FILM	1
9	PADZZ	81349	RNC55K7501FS	RESISTOR, FIXED, FILM	1
10	PADZZ	81349	RW69V102	RESISTOR, FIXED, WIRE	1
11	PADZZ	81349	RCR20G220JS	RESISTOR, FIXED, COMP	1
12	PADZZ	07716	CEAT-0196OHMSPOM 1PCT1/8W	RESISTOR.....	1
13	PADZZ	28480	5080-7122	TRANSFORMER, PULSE	1
14	PADZZ	81349	JAN-1N753A	SEMICONDUCTOR DEVIC.....	1
15	PADZZ	81349	ANTX1N4370A	SEMICONDUCTOR DEVIC.....	1
16	PADZZ	28480	5000-6229	HEAT SINK, ELECTRICA.....	1
17	PADZZ	28480	0340-0462	INSULATOR, BUSHING.....	1
18	PADZZ	07980	2190-0709	INSULATOR.....	1

END OF FIGURE

NATIONAL STOCK NUMBER AND PART NUMBER INDEX

NATIONAL STOCK NUMBER INDEX

STOCK NUMBER	FIGURE	ITEM	STOCK NUMBER	FIGURE	ITEM
5905-00-004-6118	2	22	5905-00-432-0402	2	23
5910-00-007-2004	2	9	5905-00-432-6388	2	21
6625-00-052-4921	1	15	5905-00-432-6389	3	9
5910-00-060-9619	3	4	5905-00-432-6410	2	35
5895-00-061-2906	1	28	5905-00-432-9152	2	64
5355-00-068-4557	1	9	5905-00-435-1836	3	7
5961-00-072-0094	2	18	5961-00-450-4689	2	16
5905-00-087-0545	2	20	6695-00-466-0623	1	2
	3	10	5910-00-506-7036	2	7
5961-00-088-8792	2	3	5910-00-542-7362	2	8
5905-00-102-5290	2	55	5999-00-543-0848	3	16
5910-00-103-7701	2	13	5950-00-689-1504	3	13
5961-00-104-1395	3	15	5905-00-721-3728	2	26
5905-00-104-5755	2	53	5940-00-738-6269	1	11
5905-00-104-8330	2	68	5961-00-752-6121	3	14
5905-00-104-8346	2	32	5905-00-764-9870	2	29
5905-00-110-0196	2	39	5905-00-807-7494	2	56
5905-00-110-0993	2	45	5905-00-807-7499	2	48
5905-00-111-4736	2	41	5355-00-809-9329	1	7
5905-00-111-4744	2	49	5961-00-821-0710	2	1
5905-00-111-4858	2	51		3	1
5905-00-112-0985	2	37	5970-00-840-5109	2	74
5905-00-114-5388	3	11	5355-00-860-5379	1	8
5905-00-139-9574	2	33	5961-00-866-5454	2	70
5905-00-140-7182	2	66	5930-00-867-9293	1	6
5905-00-141-0725	2	25	5961-00-867-9318	2	15
5905-00-141-0727	2	42	5910-00-884-1194	2	11
5905-00-141-1073	2	27	5905-00-892-9626	2	38
5905-00-141-1118	2	36	5310-00-903-8729	1	27
5905-00-141-1165	2	46	5961-00-904-7496	2	2
5961-00-160-5446	2	72	5905-00-910-2378	2	34
5905-00-185-8792	2	57	5930-00-918-4381	1	14
5905-00-222-5051	2	31	5961-00-931-6989	2	71
5905-00-243-2199	3	6	5910-00-931-7060	2	10
5910-00-243-5520	2	4	5905-00-935-8542	2	54
5905-00-250-6220	2	61	5961-00-937-3768	3	5
5905-00-252-4029	1	5	6240-00-951-3376	1	3
5920-00-280-4960	1	13	5910-00-965-9729	2	5
5905-00-346-8875	2	63	5961-00-967-8107	3	2
5975-00-351-6114	1	23	5905-00-974-6151	2	65
5905-00-356-3732	2	28	5905-00-975-1153	2	43
5910-00-403-8427	3	3	5961-00-985-9077	2	19
5905-00-425-1911	2	44	5940-01-008-6323	1	19
	3	8	5970-01-011-6466	3	17
5905-00-426-7096	2	47	5905-01-020-2427	2	58
5905-00-429-1104	2	62	5910-01-032-1819	2	6
5905-00-431-7828	2	24	5961-01-033-3079	2	17
5905-00-431-7832	2	59	5905-01-064-9025	1	20
5905-00-431-7833	2	67	5905-01-107-6308	3	12
5905-00-432-0380	2	60	5970-01-107-7080	3	18

NATIONAL STOCK NUMBER AND PART NUMBER INDEX

NATIONAL STOCK NUMBER INDEX

STOCK NUMBER	FIGURE	ITEM	STOCK NUMBER	FIGURE	ITEM
5910-01-122-0950	2	12			
5950-01-151-2751	2	69			
5905-01-152-6793	2	52			
5805-01-160-0529	1	26			

NATIONAL STOCK NUMBER AND PART NUMBER INDEX

PART NUMBER INDEX

FSCM	PART NUMBER	STOCK NUMBER	FIGURE	ITEM
09182	A-5950-5233-1		1	22
09182	B-1		1	30
09182	B-5950-5221-1		1	16
58474	BP21B	5940-00-738-6269	1	11
09182	C-1		1	21
09182	C-1COVER		1	17
09182	C-5950-5271-1L		1	34
09182	C-5950-5271-1R		1	33
07716	CEAT-0196OHMSPOM 1PCT1/8W	5905-01-107-6308	3	12
81349	CM15FD511G03	5910-00-060-9619	3	4
03508	C220A	5961-00-967-8107	3	2
09182	D-5950-5249-1L		1	31
09182	D-5950-5249-1R		1	29
09182	D38618	5910-00-884-1194	2	11
01121	EB-0335	5905-00-222-5051	2	31
01121	EB-2235	5905-00-102-5290	2	55
01121	EBSELECTED		2	30
01121	EB3025	5905-00-807-7494	2	56
81349	F02A250V2A	5920-00-280-4960	1	13
81349	JAN-1N753A	5961-00-752-6121	3	14
81349	JANTXIN4370A	5961-00-104-1395	3	15
81349	JAN1N4998	5961-00-904-7496	2	2
70903	KH-4096	6625-00-052-4921	1	15
04713	MJ2955	5961-01-033-3079	2	17
81349	M15098-11-004	6240-00-951-3376	1	3
81349	M39003/01-3088	5910-00-007-2004	2	9
81349	RCR20G100JS	5905-00-104-5755	2	53
81349	RCR20G102JS	5905-00-110-0196	2	39
81349	RCR20G103JS		2	40
81349	RCR20G104JS		2	50
81349	RCR20G123JS	5905-00-110-0993	2	45
81349	RCR20G161JS	5905-00-111-4736	2	41
81349	RCR20G201JS	5905-00-141-0727	2	42
81349	RCR20G220JS	5905-00-114-5388	3	11
81349	RCR20G303JS	5905-00-935-8542	2	54
81349	RCR20G333JS	5905-00-104-8330	2	68
81349	RCR20G334JS	5905-00-104-8346	2	32
81349	RCR20G364JS	5905-00-141-0725	2	25
81349	RCR20G390JS	5905-00-141-1118	2	36
81349	RCR20G471JS	5905-00-111-4858	2	51
81349	RCR20G512JS	5905-00-111-4744	2	49
81349	RCR20G564JS	5905-00-141-1073	2	27
81349	RCR20G682JS	5905-00-141-1165	2	46
81349	RCR32G622JS	5905-00-435-1836	3	7
81349	RNC55K10R0FS	5905-00-243-2199	3	6
81349	RNC55K1000FS	5905-00-432-0380	2	60
81349	RNC55K1211FS	5905-00-425-1911	2	44
			3	8
81349	RNC55K1501FS	5905-00-431-7828	2	24
81349	RNC55K1502FS	5905-00-004-6118	2	22

NATIONAL STOCK NUMBER AND PART NUMBER INDEX

PART NUMBER INDEX

FSCM	PART NUMBER	STOCK NUMBER	FIGURE	ITEM
81349	RNC55K2002FS	5905-00-432-0402	2	23
81349	RNC55K3011FS	5905-00-432-9152	2	64
81349	RNC55K4751FS	5905-00-112-0985	2	37
81349	RNC55K4752FS	5905-00-250-6220	2	61
81349	RNC55K6191FS	5905-00-432-6388	2	21
81349	RNC55K6192FS	5905-00-721-3728	2	26
81349	RNC55K7500FS	5905-00-140-7182	2	66
81349	RNC55K7501FS	5905-00-432-6389	3	9
81349	RNC55K9090FS	5905-00-431-7832	2	59
81349	RNC55K9091FS	5905-00-431-7833	2	67
81349	RNC60K1001FS	5905-00-432-6410	2	35
81349	RNC60K3401FS	5905-00-429-1104	2	62
81349	RNC60K3650FS	5905-00-346-8875	2	63
81349	RNC60K4220FS	5905-00-426-7096	2	47
81349	RW68V511	5905-00-975-1153	2	43
81349	RW69V102	5905-00-087-0545	2	20
			3	10
81349	RW69V132	5905-00-764-9870	2	29
28520	SR-5P-1	5975-00-351-6114	1	23
79307	T4-4		1	24
14723	014A020	5910-00-542-7362	2	8
28480	0180-1852	5910-00-931-7060	2	10
28480	0180-1895	5910-01-122-0950	2	12
28480	0340-0166		2	75
28480	0340-0462	5970-01-011-6466	3	17
28480	0360-1234	5940-01-008-6323	1	19
28480	0370-0084	5355-00-809-9329	1	7
28480	0370-0101	5355-00-068-4557	1	9
28480	0370-0179	5355-00-860-5379	1	8
28480	06255-60003		1	32
28480	06255-60021	5805-01-160-0529	1	26
28480	0811-0957	5905-01-152-6793	2	52
28480	0811-1818	5905-00-185-8792	2	57
80131	1N5059	5961-00-088-8792	2	3
06486	1N821	5961-00-866-5454	2	70
11236	110-F4-1K	5905-01-020-2427	2	58
11236	110-F4-250	5905-00-974-6151	2	65
11236	110-F4-5K	5905-00-892-9626	2	38
07980	1120-1139		1	1
28480	1410-0052	5895-00-061-2906	1	28
56289	150D156X0050R2		2	14
56289	150D475X9050B2	5910-00-243-5520	2	4
28480	1510-0040		1	10
28480	1854-0225	5961-00-072-0094	2	18
28480	1854-0229	5961-00-867-9318	2	15
28480	1901-0033	5961-00-821-0710	2	1
			3	1
28480	1902-0797	5961-00-160-5446	2	72
28480	1902-3070	5961-00-931-6989	2	71
56289	192P10352	5910-00-965-9729	2	5
56289	2N2907A	5961-00-450-4689	2	16

NATIONAL STOCK NUMBER AND PART NUMBER INDEX

PART NUMBER INDEX

FSCM	PART NUMBER	STOCK NUMBER	FIGURE	ITEM
80131	2N3391A	5961-00-985-9077	2	19
80131	2N3417	5961-00-937-3768	3	5
28480	2100-0994	5905-00-139-9574	2	33
28480	2100-0997	5905-00-356-3732	2	28
28480	2100-1854	5905-00-252-4029	1	5
07980	2190-0709	5970-01-107-7080	3	18
28480	23-47KR5	5905-00-807-7499	2	48
56289	242E5025	5905-00-910-2378	2	34
56289	292P10252	5910-00-506-7036	2	7
56289	292P10452	5910-01-032-1819	2	6
28480	2950-0034	5310-00-903-8729	1	27
56289	30D105F150BA2	5910-00-403-8427	3	3
28480	3100-1910	5930-00-867-9293	1	6
75915	342014		1	12
28480	4040-0295	6695-00-466-0623	1	2
71785	422-13-11-013		1	18
28480	5000-6229	5999-00-543-0848	3	16
28480	5020-5598		2	73
28480	5060-6176		1	25
28480	5080-7122	5950-00-689-1504	3	13
87034	54-6168126A1H	5930-00-918-4381	1	14
73978	6BR-37	5905-01-064-9025	1	20
28480	7124-0389		1	4
06694	734K	5970-00-840-5109	2	74
28480	9100-1838	5950-01-151-2751	2	69
13499	913-3235-00	5910-00-103-7701	2	13

By Order of the Secretaries of the Army, the Navy and the Air Force:

Official:

JOHN A WICKHAM, JR.
General, United States Army
Chief of Staff

MILDRED E. HEDBERG
Brigadier General, United States Army
The Adjutant General

G. B. SCHICK, JR.
Rear Admiral, United States Navy
Commander, Naval Electronic
Systems Command

Official:

EARL T. O'LOUGHLIN
General, USAF, Commander, Air Force
Logistics Command

CHARLES A. GABRIEL
General, USAF
Chief of Staff

DISTRIBUTION:

To be distributed in accordance with DA Form 12-36 literature requirements for PP-7833/U.

RECOMMENDED CHANGES TO EQUIPMENT TECHNICAL PUBLICATIONS

SOMETHING WRONG WITH PUBLICATION



THEN...JOT DOWN THE DOPE ABOUT IT ON THIS FORM. CAREFULLY TEAR IT OUT, FOLD IT AND DROP IT IN THE MAIL.

FROM: (PRINT YOUR UNIT'S COMPLETE ADDRESS)

DATE SENT

PUBLICATION NUMBER

PUBLICATION DATE

PUBLICATION TITLE

BE EXACT PIN-POINT WHERE IT IS

PAGE NO.	PARA-GRAPH	FIGURE NO.	TABLE NO.
----------	------------	------------	-----------

IN THIS SPACE, TELL WHAT IS WRONG AND WHAT SHOULD BE DONE ABOUT IT.

TEAR ALONG PERFORATED LINE

PRINTED NAME, GRADE OR TITLE AND TELEPHONE NUMBER

SIGN HERE

